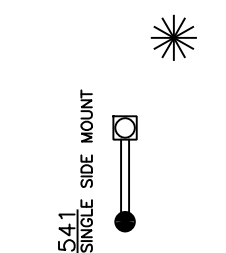
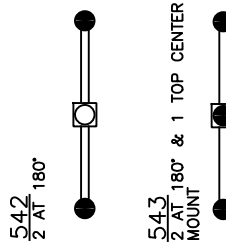
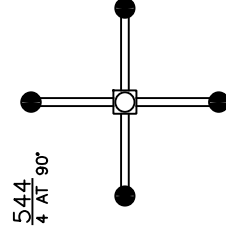
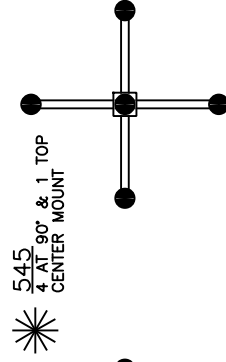
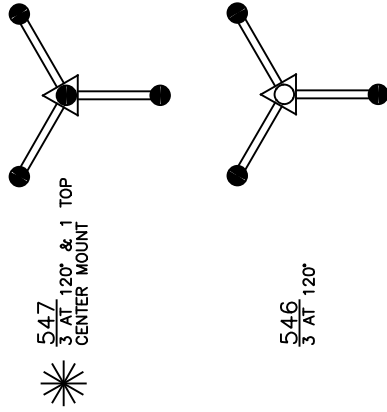


542  
2 AT 180° AS SHOWN

BRACKET ASSEMBLY AS SHOWN ABOVE CONSISTS OF CAST ALUMINUM BRACKET ARMS W/ CAST ALUMINUM CENTER HUB W/ REMOVABLE CAST ALUMINUM CAP. WELDED CONSTRUCTION, 6 EA 5/16-18 S'STL SET SCREWS SUPPLIED FOR SECURING ASSEMBLY TO POST TOP AND SECURING CENTER TOP CAP TO CENTER HUB

NOTE: WHEN CENTER MOUNT LANTERN IS SPECIFIED, 1 PC. OF 3" DIA. X .125" WALL X 12" LG. ALUMINUM TUBING SUPPLIED INSTEAD OF TOP CAP. TUBING PROTRUDES OUT OF CENTER HUB 8".



Drawing for illustration only - scale approximate

BRACKET ASSY	541	542	543	544	545	546	547
HEIGHT	12 1/2"	12 1/2"	19 3/4"	12 1/2"	19 3/4"	12 1/2"	19 3/4"
WIDTH	20 1/8"	35 1/2"	35 1/2"	35 1/2"	35 1/2"	30 5/8"	30 5/8"
PROJECTION							
TOP TO OUTLET							

**Hanover LANTERN**  
 425 E. MIDDLE ST. HANOVER PA 17331  
 PH: (717) 632-9464 - FAX: (717) 699-2930

SCALE: 1=4    DATE: 09/23/97    DWG BY: BLL

TITLE: POST TOP BRACKET ASSEMBLIES

DWG. NO. 541 THRU 547