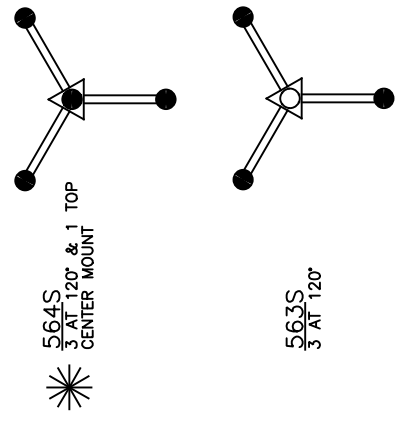


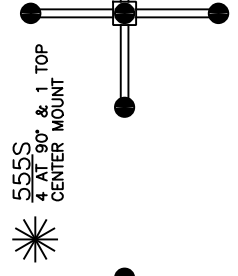
552S  
2 AT 180° AS SHOWN

BRACKET ASSEMBLY AS SHOWN ABOVE CONSISTS OF CAST ALUMINUM BRACKET ARMS W/ DECORATIVE SCROLLS, CAST ALUMINUM BOTTOM KNOBS, CAST ALUMINUM CENTER HUB W/ REMOVABLE CAST ALUMINUM CAP. WELDED INTERNAL CONSTRUCTION, 6 EA. 5/16-18 S.S.T'L SET SCREWS SUPPLIED FOR SECURING ASSEMBLY TO POST TOP AND SECURING CENTER TOP CAP TO CENTER HUB

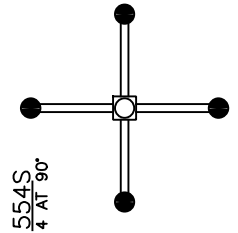
NOTE: WHEN CENTER MOUNT LANTERN IS SPECIFIED, 1 PC. OF 3" DIA. X .125" WALL X 12" LG. ALUMINUM TUBING SUPPLIED INSTEAD OF TOP CAP. TUBING PROTRUDES OUT OF CENTER HUB 8".



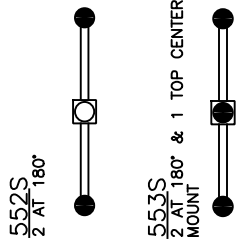
564S  
3 AT 120° & 1 TOP  
CENTER MOUNT



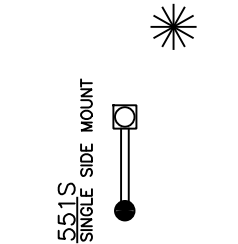
555S  
4 AT 90° & 1 TOP  
CENTER MOUNT



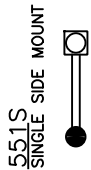
554S  
4 AT 90°



552S  
2 AT 180°



553S  
2 AT 180° & 1 TOP CENTER  
MOUNT



551S  
SINGLE SIDE MOUNT

Drawing for illustration only - scale approximate

BRACKET ASS'Y	551S	552S	553S	554S	555S	563S	564S
HEIGHT	13 5/8"	13 5/8"	20"	13 5/8"	20"	13 5/8"	20"
WIDTH	21 1/4"	42 1/2"	42 1/2"	42 1/2"	42 1/2"	35 1/4"	35 1/4"
PROJECTION							
TOP TO OUTLET							

**Hanover LANTERN**  
 425 E. MIDDLE ST. HANOVER PA 17331  
 PH: (717) 632-6464 - FAX: (717) 669-2630

SCALE: 1=4    DATE: 08/28/97    DWG BY: BLL

TITLE: POST TOP BRACKET ASSEMBLIES  
 DWG. NO. 551S THRU 555S + 563S & 564S